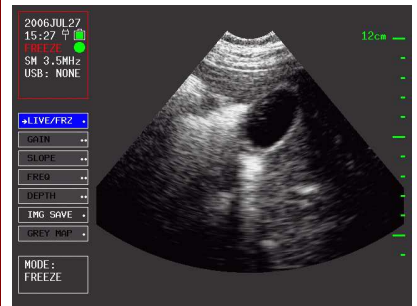


System	The Perception S is the next generation in portable, high performance ultrasound machines. Lightweight and powerful with exceptional image quality, the Perception S is designed around a rugged embedded computer with internal solid state storage. This along with its advanced reprogrammable FPGA design allows the Perception S to be easily field upgraded with new features helping to preserve your investment.
Scanning Method	<ul style="list-style-type: none"> Mechanical multi-frequency Sector probes with reliable optical encoders Real time image enhancement using PCScan Technology
LCD Display	<ul style="list-style-type: none"> 6.4" High resolution full color TFT LCD
Image Processing	<ul style="list-style-type: none"> Advanced digital image processing using MMX DSP extensions. Frame Rate: typically 14 FPS dependent on depth
Image Control	<ul style="list-style-type: none"> Freeze/Unfreeze anytime Gain controls: master, near, slope Frequency control: low, medium, high Four depths Three gray scales
Display Modes	<ul style="list-style-type: none"> B mode (standard imaging) CINE mode with continuous loop play and single frame advance
Operator Interface	<ul style="list-style-type: none"> Powerful and intuitive menu system with status icons Freeze button, four cursor buttons, select button, and power button Preferred settings are remembered Probe button can control any menu function
Image Save	<ul style="list-style-type: none"> Hundreds of images may be saved and reviewed on internal storage Images may be transferred to USB thumb disk for viewing on any computer
On Screen Status	<ul style="list-style-type: none"> Date and time Scan Mode: Live or Freeze Battery level and AC present icons CINE status icon Probe type and frequency Frames per second FPS USB storage status
Power	<ul style="list-style-type: none"> Internal 27Wh battery (approximately 2 hours continuous operation) Optional 27Wh external hot swappable battery extends run time Standard UL and CE approved universal power supply
Connectors	<ul style="list-style-type: none"> Rugged probe connector AC and external battery power: 2.1mm DIN USB port: PC standard type A
Dimensions	<ul style="list-style-type: none"> L/W/H: 6.6 x 8.9 x 2.7 in Weight: 2.5 lbs

TECHNICAL SPECIFICATIONS

Perception S

*Next Generation Ultrasound Scanner
Using PCScan™ Technology*



STANDARD ACCESSORIES

- Mechanical sector probe
- Instruction Manual
- Carrying vest

OPTIONAL ACCESSORIES

- 3.5Mhz mechanical sector probe
- 5.0Mhz mechanical sector probe
- 5.0Mhz side fire probe
- External hot swap battery packs
- USB memory stick
- Storage case

Manufactured by:

GS Designs LLC

www.gsdesignsllc.com

sales@gsdesignsllc.com

Tel: 480-988-0910

Fax: 480-988-0912

Made in the USA