

■ FOR CVC PLACEMENT

**Extreme  
Access\***

**SITE RITE<sup>®</sup> 5**  
VASCULAR ACCESS

## Ultrasound System

Affordable, Easy-to-Use Ultrasound for  
Central Venous Access



**BAIRD**

ACCESS SYSTEMS

LARGE IMAGE / EASY-TO-USE / PORTABLE / MAXIMUM CONTROL FROM WITHIN THE STERILE FIELD

▫ **Improved Patient Outcomes**

The Site-Rite<sup>5</sup> Ultrasound System meets AHRQ (Agency for Healthcare Research and Quality) recommendations for use of real-time ultrasound guidance for central line placement.

▫ **Reduction of Complications**

Clear vessel visualization reduces risk of inadvertent arterial puncture, hematoma or pneumothorax.

▫ **Demonstrated Clinical Efficacy**

Clinical investigation has demonstrated increases in vascular access procedural success for central catheter placement among clinicians using the Site-Rite<sup>5</sup> Ultrasound System for PICC and CVC placement.

▫ **Patented Needle-Guide**

The Site-Rite<sup>5</sup> Ultrasound System's patented needle guides direct the needle to the target vessel.



▫ **Integrated Carrying Handle for Increased Portability**

▫ **Large, 12.1" Screen**

▫ **Vascular Access Image Depths**

- Superficial 1.5cm image depth for shallow imaging, including pediatric placements
- Deep 6cm image depth for deeper needle guidance, including bariatric patients

▫ **Intuitive and Easy-to-Use Control Buttons**

▫ **60-Minute Internal Battery**

▫ **Industry Standard VESA Mount for Site-Rite<sup>5</sup>**

▫ **Vascular Access Probe**

- Solid state vascular access probe
- Control buttons located on the probe allow control, including printing, from within the sterile field

▫ **Locking Drawer for Sharps and Drugs**

▫ **Flat Workspace for Increased Flexibility During Bedside Vascular Access Device Placement**

▫ **Vertical File for Medical Files and Patient Charts**

▫ **Large Storage Bins for Transport of Needle Guides Supplies Used in Vascular Access Device Placement**



2.5 Hour External Battery and AC Adapter

Large Wheels for Negotiating Elevator Transitions and other Obstacles

## ROLL STAND OPTIONS

### Standard - Site~Rite® 5 Roll Stand

- Industry standard VESA mount for the Site~Rite 5
- One large storage basket for supplies
- Side arm securely holds the Site~Rite 5 probe during transport and allows probe covers to be applied using sterile technique.
- Vertical file for medical files and patient charts
- 2.5 hour external battery and AC adapter
- Large wheels for negotiating elevator transitions and other obstacles

#9760031



### Collapsible - Site~Rite® 5 Roll Stand

- Highly portable roll stand for clinicians on the go
- Telescoping Pole for height adjustment
- Side arm securely holds the Site~Rite 5 probe during transport and allows probe covers to be applied using sterile technique.
- Bracket for AC adapter
- Collapsible wheel base

#9760030

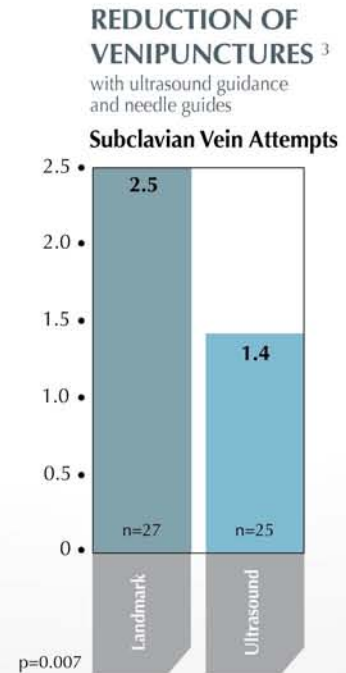
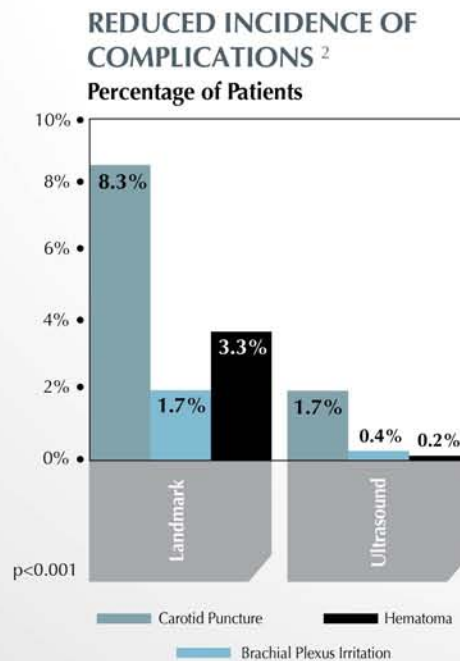
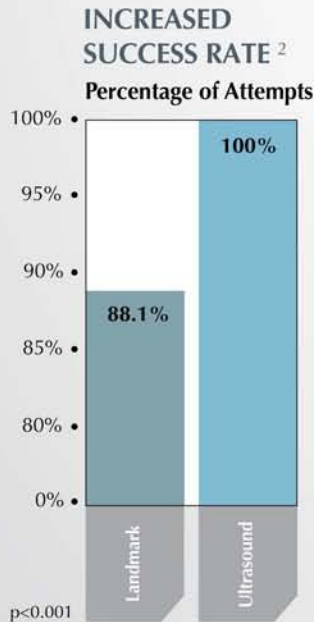


# Safety and Efficacy for Central Venous Access

<sup>3</sup>  
**Extreme  
Access\***

The Site~Rite<sup>®</sup> 5 ultrasound system conforms to the Agency for Healthcare Research and Quality (AHRQ) recommendation for use of real time ultrasound for central line placement<sup>1</sup>.

- **Increased Success Rates<sup>2</sup>**  
Real time ultrasound guidance increases the success rates of internal jugular and subclavian access.
- **Decreased Complications<sup>2</sup>**  
Reduced incidences of carotid puncture, hematoma and brachial plexus irritation.
- **Reduced Venipunctures<sup>3</sup>**  
Reduction in the number of venipuncture kits used to achieve access.



## Site~Rite<sup>®</sup> 5 Needle Guides and Probe Covers

NUMBER	DESCRIPTION
9001C0212	18 ga. Needle Guide Kit <sup>+</sup>
9001C0214	20 ga. Needle Guide Kit <sup>+</sup>
900013B01	21 ga. Needle Guide Kit <sup>+</sup>
900023B01	Intraoperative Ultrasound Cover Kit
9001C0197	Probe Sheath Kit

## Product Ordering Codes

CODE	NAME
9760029	Site~Rite <sup>®</sup> 5 Ultrasound System
9760030	Collapsible Roll Stand
9760031	Standard Roll Stand
9760032	VAD Bedside Roll Stand
9760039	Sony <sup>®</sup> Medical Printer

+ Needle guide kits include needle guides, sterile conductive gel, elastic bands and ultrasound probe sheath.

**BARD**

## Bard Access Systems, Inc.

### United States

Bard Access Systems  
Salt Lake City, Utah 84116  
801-595-0700

**Customer Service:** 800-545-0890

**Clinical Information:** 800-443-3385

www.bardaccess.com

1. Making Health Care Safer. A Critical Analysis of Patient Safety Practices: Summary. July 2001. AHRQ Publication No. 01-E057. Agency for Healthcare Research and Quality, Rockville, MD.

2. Denys BG, Uretsky BF, Reddy PS. Ultrasound-assisted cannulation of the internal jugular vein. A prospective comparison to the external landmark-guided technique. Circulation 1993;87:1557-1562.

3. Gualtieri E, Deppe SA, Siperly ME, Thompson DR. Subclavian venous catheterization: greater success rate for less experienced operators using ultrasound guidance. Crit Care Med 1995;23:692-697.

Please consult product labels and inserts for any indications, contraindications, hazards, warnings, cautions and instructions for use.

© Copyright 2005 Bard Access Systems, Inc. All Rights Reserved. \* Bard, Site~Rite and Extreme Access are trademarks or registered trademarks of C. R. Bard, Inc. or an affiliate.